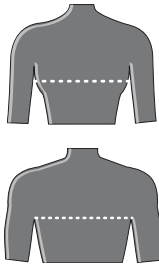


## eyce jacket, vest, and parka sizing

These charts indicate the size most people would be comfortable wearing. If you fall in-between sizes, order the next size up.

### chest

With arms down measure around the largest part of your chest.



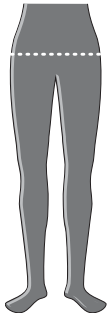
### waist

Measure around your waist at the height you normally wear pants.



### hips

Stand with feet together and measure around the fullest part of your hips.



youth jacket sizes	YS	YM	YL	YX
chest	24-25"	26-27"	28-29"	30-31"
typical Size	5/6	7/8	10/12	14/16

ladies jacket sizes	XS	S	M	L	XL
chest	32-33"	34-36"	37-39"	40-42"	44-46"
typical size	2/4	6	8/10	12/14	16

mens jacket sizes	XS	S	M	L	XL	2X
chest	32-33"	34-36"	37-39"	40-42"	44-46"	48-50"

## eyce pant sizing

These charts indicate the size most people would be comfortable wearing. If you fall in-between sizes, order the next size up.

youth pant sizes	YS	YM	YL	YX
waist	19-20"	21-22"	23-24"	25"
hips	24-25"	26-27"	28-29"	30-31"
inseam	23"	24"	25"	26"

ladies pant sizes	XS	S	M	L	XL
waist	26-27"	28-30"	32-34"	35-36"	38-40"
hips	32-34"	35-37"	38-40"	41-43"	44-46"
inseam	all sizes available in 28", 30", and 33"				

mens pant sizes	XS	S	M	L	XL	2X
waist	26-27"	28-30"	32-34"	35-36"	38-40"	42-44"
inseam	all sizes available in 29", 31", and 34"					

